



# TBM SERIES

## CIRCULAR FULL FACE BORERS



TBM and back-up equipment shown in EPB mode

TBM OUTLINE DATA	TYPICAL SPECIFICATION
Outside Diameter	From 2 m to over 10 m
Total Power	From 290 kW
Power on Cutter	From 200 kW
Hydraulic System Working Pressure	350 bar

### ADVANTAGES

- Back-up equipment designed to suit preferred tunnelling method
  - Can be designed for dual operation – Open or EPB mode
    - Rotating or fixed cutting tools
    - Various tunnel lining methods can be used

The cutter unit is normally mounted on a steerable front can with inundation doors if required. Excavated material is transported from the cutter unit by a belt or screw conveyor. The conveyor overlap can be designed to allow a train of segments, grout and muck skips, sufficient for one cycle of advance.

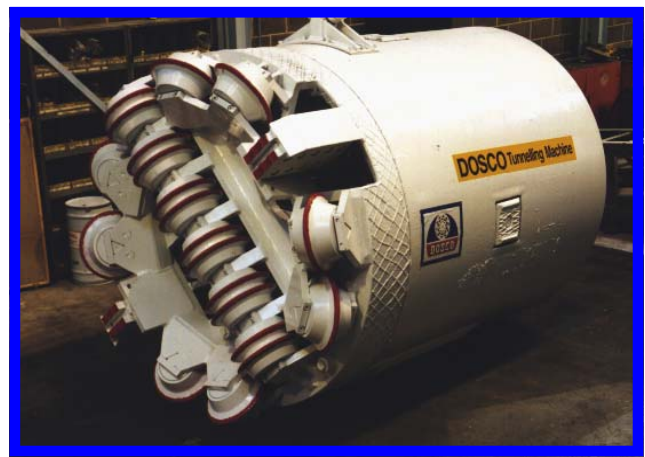


**YOUR PARTNER**  
**FOR ALL ROUND QUALITY AND RELIABILITY**

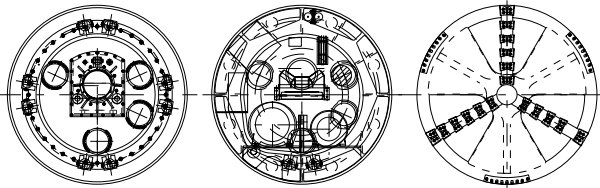
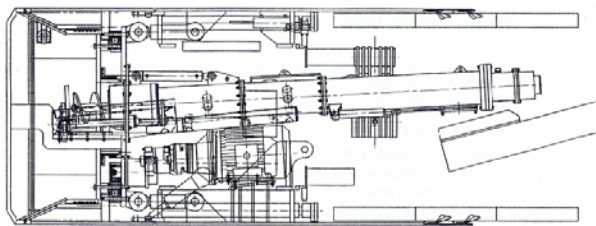




**TBM conversions and repairs**



**TBM series**



**TBM series outline section drawing**



**TBM series**

**OPTIONS include:**

- **Dust Extractor** – on board equipment to remove dust from heading
- **Cutting Head Choice** – various designs to suit strata conditions
- **Ring/Segment Erector**
- **Grouting Equipment**
- **Closed Water Cooling System**
- **Gas Detection Systems**
- **Electrical Transformer**

The back-up system is mounted on sledges which are towed behind the excavation unit. These sledges carry the conveyor supports, power pack, electrical control equipment, boost pump and rail tracks for transportation of debris/materials.

Document Issue 1 Revision 2 05/08/03

*PLEASE NOTE – Data is intended as a guide only as machines may vary according to specification requirements.*



**DOSCO OVERSEAS ENGINEERING LTD**  
 Ollerton Road, Tuxford, Newark Nottinghamshire, NG22 0PQ England  
 Telephone: + 44 (0) 1777 870621 Facsimile: + 44 (0) 1777 871580  
 E-mail: info@dosco.co.uk Website: www.dosco.co.uk



A member of the Amco Corporation Plc group of companies.

